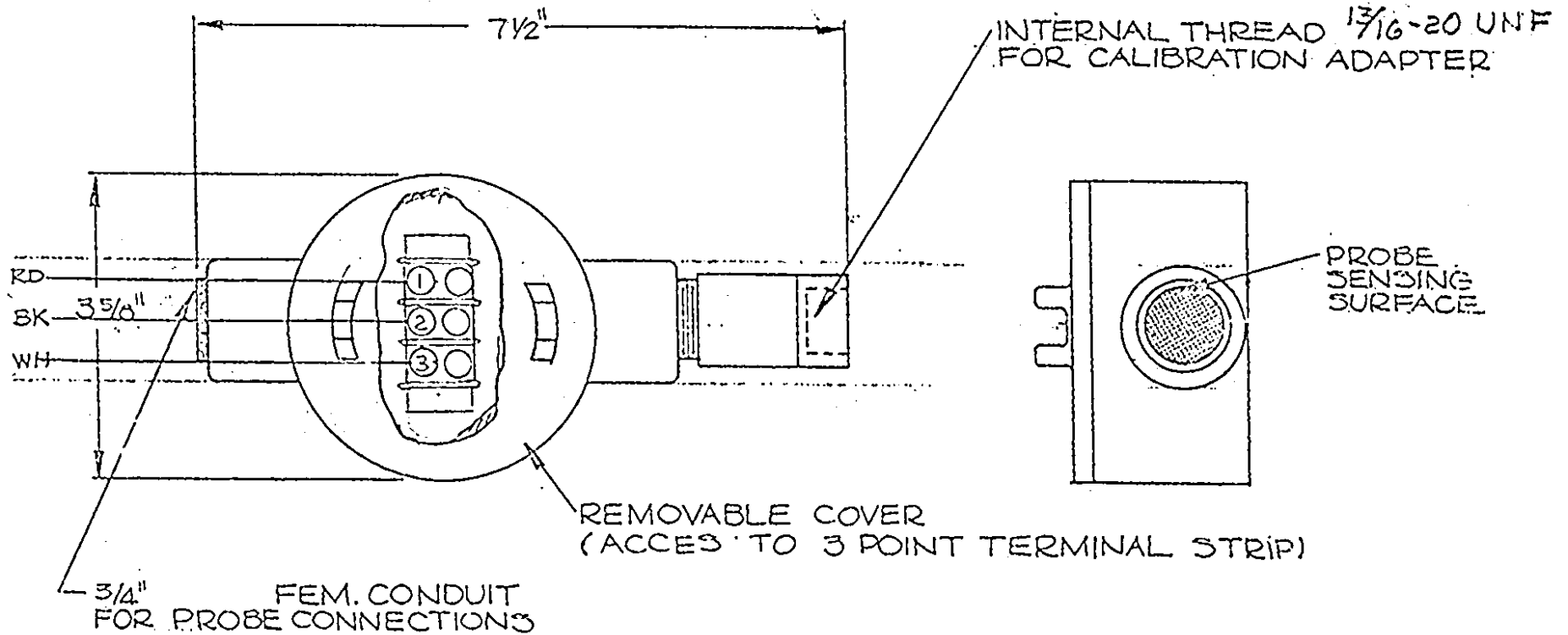


REVISIONS

REV	DESCRIPTION	DATE	APPROVED
4	DELETED 1/2" COND. CALL OUT	9-28-82	J. Chernick
5	ECO# 94-485	8-26-94	JLT



ITEM	QTY	PART NO.	DESCRIPTION				
BILL OF MATERIAL							
DO NOT SCALE DWG		<small>THIS DRAWING IS THE PROPERTY OF TELEDYNE BROWN ENGINEERING ANALYTICAL INSTRUMENTS AND CONTAINS CONFIDENTIAL INFORMATION. IT IS NOT TO BE LOANED, REPRODUCED OR USED WITHOUT WRITTEN PERMISSION.</small>					
TOLERANCE UNLESS OTHERWISE SPECIFIED: ANGULAR ± 1/2		TELEDYNE BROWN ENGINEERING Analytical Instruments CITY OF INDUSTRY, CALIFORNIA 91748					
LINEAR { <table style="display: inline-table; vertical-align: middle;"> <tr><td>X</td><td>= ±.1</td></tr> <tr><td>XX</td><td>= ±.02</td></tr> <tr><td>XXX</td><td>= ±.005</td></tr> </table>				X	= ±.1	XX	= ±.02
X	= ±.1						
XX	= ±.02						
XXX	= ±.005						
SIGNATURES		DATE	TITLE				
DSGN: JLT CHK: ENGR: JLT APPR: JLT		6-18-75	REMOTE COMBUSTIBLES PROBE OUTLINE & INTERCONN. DIAGRAM P/N A-12431, SUITABLE FOR CLASS I DIV I GROUPS B, C & D				
N/A-12431		S.O.:	MATL.				
NEXT ASSY		MODEL	DWG NO. A-13450				
		CAD I.D.	REV 5				

N/A-12431	
NEXT ASSY	MODEL