

NOTES: UNLESS OTHERWISE SPECIFIED.

- FINAL ASS'Y: 3010TA ----- A65693  
3010PA ----- C66106

2. DO NOT GROUND EITHER OUTPUT SIGNAL LEADS GROUND SHIELD AT THE ANALYSIS UNIT

3. WIRE RECOMMENDATIONS:

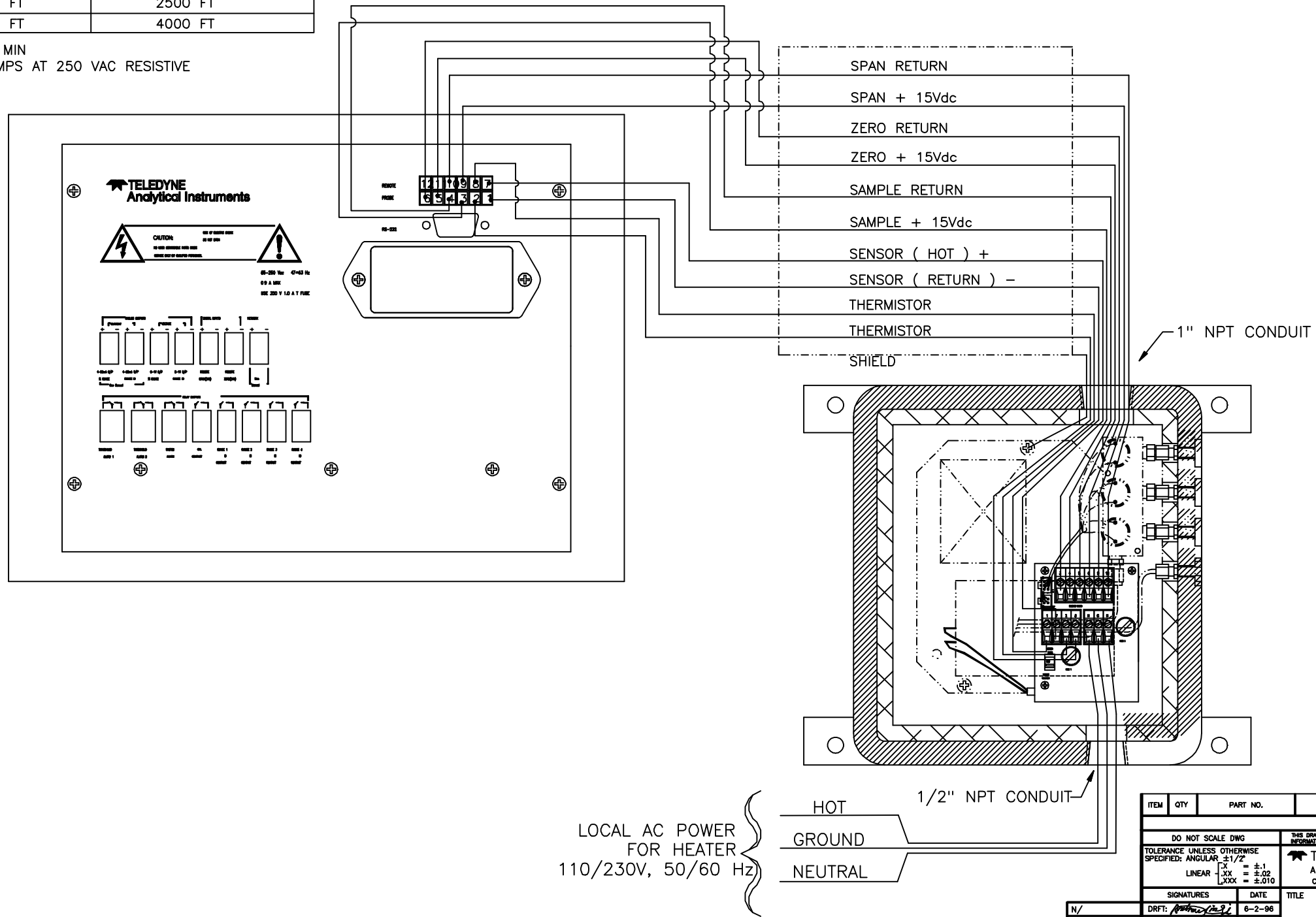
SENSOR SIGNAL: 22 GA (MIN.) SHIELDED CABLE, MAX. LENGTH OF 22 GA 4,000 FT.  
SOLENIOD CONTROL SIGNALS: 22 GA (MIN), MAX. LENGTH OF 22 GA 1000 FT.  
SEE THE FOLLOWING CHART FOR ALTERNATIVE WIRE GA.

WIRE GAGE	MAX. LENGTH FOR SENSOR	MAX. LENGTH FOR SOLENOID
22	4000 FT	1000 FT
20	6900 FT	1750 FT
18	10,000 FT	2500 FT
16	15,000 FT	4000 FT

POWER AND GROUND: 16 GA MIN

- ALARM CONTACT RATING: 3 AMPS AT 250 VAC RESISTIVE

REVISIONS				
REV	DESCRIPTION	DATE	APP.	REV.
0	Initial Release ECO 96-378	6-18-96	ALX	--
1	INC. ECO 96-553	8-19-96	ALX	ALX



LOCAL AC POWER FOR HEATER  
110/230V, 50/60 Hz

ITEM	QTY	PART NO.	DESCRIPTION
BILL OF MATERIAL			
DO NOT SCALE DWG			
TOLERANCE UNLESS OTHERWISE SPECIFIED: ANGULAR ±1/2°			
LINEAR .X = ±.1 .XX = ±.02 .XXX = ±.010			
SIGNATURES		DATE	TITLE
N/	DRFT: <i>[Signature]</i>	6-2-96	WIRING DIAGRAM MODEL 3010TA/PA
I/	CHK:		
O/	APPR: A. XING		
P/	ENGR: A. XING		
F/ NOTED	S.O.		
REFERENCE	CAD ID D64950-0		
DWG NO. D-64950			SCALE NONE
			SHEET 1 OF 1
			REV 1